

ENGINEERING EXCELLENCE, TAILORED SOLUTIONS, LASTING SUCCESS.





Metik Consulting was founded in July 2023, with the vision to become one of the preeminent civil and structural consulting engineer firms in South Africa. We are a dedicated team of experts committed to providing meticulously engineered approaches from conceptual planning to the final completion of every project. With relentless focus on detail, we ensure long-lasting and sustainable solutions that exceed expectations.

At Metik Consulting, we understand that every project is unique and requires a tailored approach. Our team of highly skilled engineers and technical staff combines technical expertise with innovative thinking to deliver comprehensive solutions that meet the specific needs of each client. We strive for excellence in every aspect of our work, from initial design and analysis to construction management and post project support.

Our commitment to quality, teamwork and attention to detail are the cornerstones of our work philosophy. We believe in thorough planning and precise execution to achieve optimal results. Metik Consulting employs the latest technologies and industry best practices, to ensure cost effective sustainable solutions. Customer satisfaction is at the heart of everything we do. We value open communication, collaboration, and building strong relationships with our clients and industry peers. We work closely with the team, listening to the needs, understanding the goals, and providing personalized solutions that align with the client's vision. Metik Consulting is committed to transparency and integrity with the team throughout the entire project lifecycle.





OUR TEAM

Metik Consulting consist of a team of highly skilled and experienced engineers, technologists, and BIM modellers and coordinators. The directors employ a hands-on approach and are actively involved from the conceptual planning phases right through to the completion of the project.

With a combined experience of nearly 50 years, our team is equipped with the knowledge, skills, and expertise to tackle the most complex civil and structural engineering challenges. We have successfully delivered projects across South Africa leaving a lasting impact on communities and infrastructure. Our team's extensive experience, coupled with our unwavering commitment to excellence, positions Metik Consulting as one of the preeminent civil and structural consulting engineering firms in South Africa.

At Metik Consulting, we recognize the importance of diversity, equality, and inclusivity in the workplace and the broader South African society. We are dedicated to fostering an inclusive work environment that celebrates diversity and provides equal access to growth and advancement opportunities.





OUR SERVICES

OUR CIVIL AND STRUCTURAL CONSULTING ENGINEERING FIRM OFFERS A COMPREHENSIVE RANGE OF PROFESSIONAL SERVICES WITH SPECIALIZATION IN THE FOLLOWING:

- Civil infrastructure master planning design
- Earthworks design
- Stormwater management
- Township services
- Road design
- Investigation, analysis and reporting of existing services
- Warehousing and distribution centres
- Office developments
- Industrial developments
- Residential developments
- Motor dealerships
- Commercial and retail developments
- Project construction management
- Hotels & Resorts
- Outline scheme and stormwater management reports for Township Services
- Integrated 3D models to visualise the proposed developments and earthworks solutions
- Mining & Heavy Industrial Civil and Structural Engineering





MINING & HEAVY INDUSTRIAL

CIVIL AND STRUCTURAL ENGINEERING

Building on our proven expertise in commercial civil and structural engineering, we now deliver full-lifecycle engineering solutions for the mining and heavy industrial sectors. From greenfield developments to operational asset management, our expanded capability set includes:

Core Engineering Services

- Large-scale structural design and detailing for crushers, ball mills, SAG mills, screening buildings, culverts, substations, control buildings, conveyors, process plants, stockpiles, and materials handling systems.
- Heavy foundation and piling design for dynamic and vibrational loads (seismic and machine-induced loading conditions).
- Design of large storage tanks and foundations to EN 14015 and API 650 (welded) as well as proprietary bolted tank systems developed with a reputable steel contractor.
- Bulk water and wastewater infrastructure– pipelines, storm water attenuation and management.
- SIMM (Structural Inspection & Maintenance Management) inspections and outcomes engineering.

Specialized Ancillary Services

- 3D laser scanning & digital twins for as-built verification, clash detection, and brownfield upgrades.
- Geotechnical investigations & soil improvement designs, in consultation with specialist geotechnical contractors (dynamic consolidation, ground improvement technique, deep soil mixing, grouting etc.).
- Independent Design Reviews, Investigative Engineering and Trade-Off Studies
- Dynamic & vibrational analysis (finite element modelling, operational modal analysis, fatigue assessment).
- Project Management and On-site monitoring of minor works – real-time structural health monitoring, construction supervision, and defect rectification.
- Mining-specific architectural services – control rooms, change houses, administration buildings, and workshops.

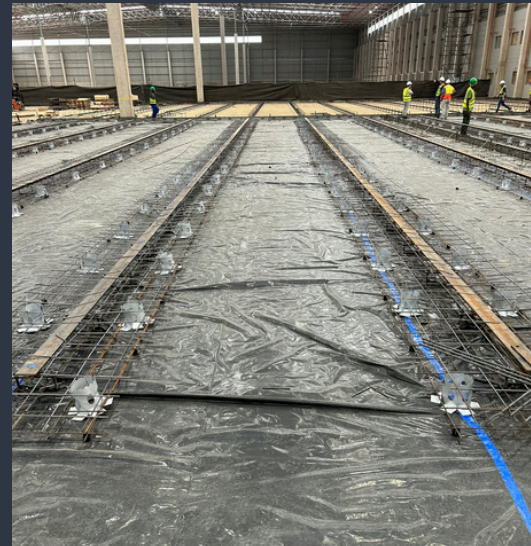


PROJECT PORTFOLIO



Clairwood Logistics Park LP6

Client: Fortress
Description: New warehouse and offices.
Size: 32 000 m²
Completion: 2026
Scope: Structural and Civil Engineering



Dromex Warehouse Cornubia

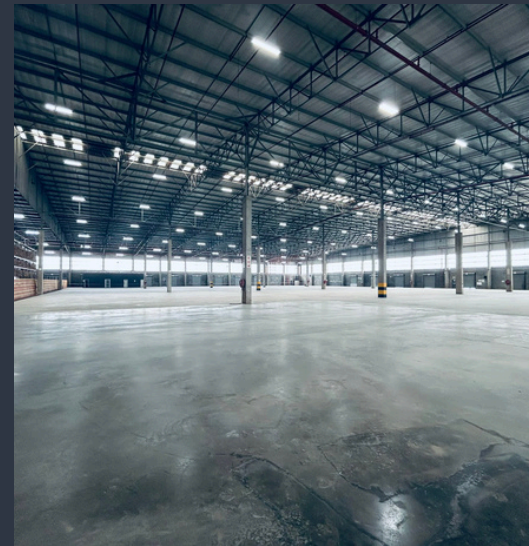
Client: Fortress
Description: New ground floor slab with cast in rails for mobile racking.
Size: 24 000 m²
Completion: 2023
Scope: Structural Engineering

PROJECT PORTFOLIO



Clairwood Logistics Park: Pocket 5B

Client: Fortress
Description: New warehouse.
Size: 12 000 m²
Completion: 2024
Scope: Structural and Civil Engineering



Gosforth Park Warehouse

Client: City Industrial Property
Description: New warehouse floor slab for robotics MHE's.
Size: 8 000 m²
Completion: 2025
Scope: Structural Engineering



PROJECT PORTFOLIO



Boxer Store Ennerdale

Client: Benav Properties
Description: New Boxer store and line shops.
Size: 3 000 m²
Completion: 2025
Scope: Structural and Civil Engineering



Prince Buthelezi Mall

Client: Moolman Group and Twin City
Description: New mall in Empangeni, KZN.
Size: 37 000 m²
Completion: 2026
Scope: Structural and Civil Engineering



PROJECT PORTFOLIO



Sandown CV Centurion

Client: DTSA
Description: Additions & alterations to existing commercial vehicles facility.
Completion: 2024
Scope: Structural and Civil Engineering



PROJECT PORTFOLIO



Roodevalley Resort

Client: NV Properties
Description: Additions & alterations to existing facility.
Completion: 2024
Scope: Structural and Civil Engineering



City Lodge: V&A Waterfront

Client: City Lodge
Description: Additions & alterations to existing hotel.
Completion: 2025
Scope: Structural Engineering



PROJECT PORTFOLIO



Stilbaai Residence

Description: New residence
Completion: 2025
Scope: Structural and Civil Engineering

